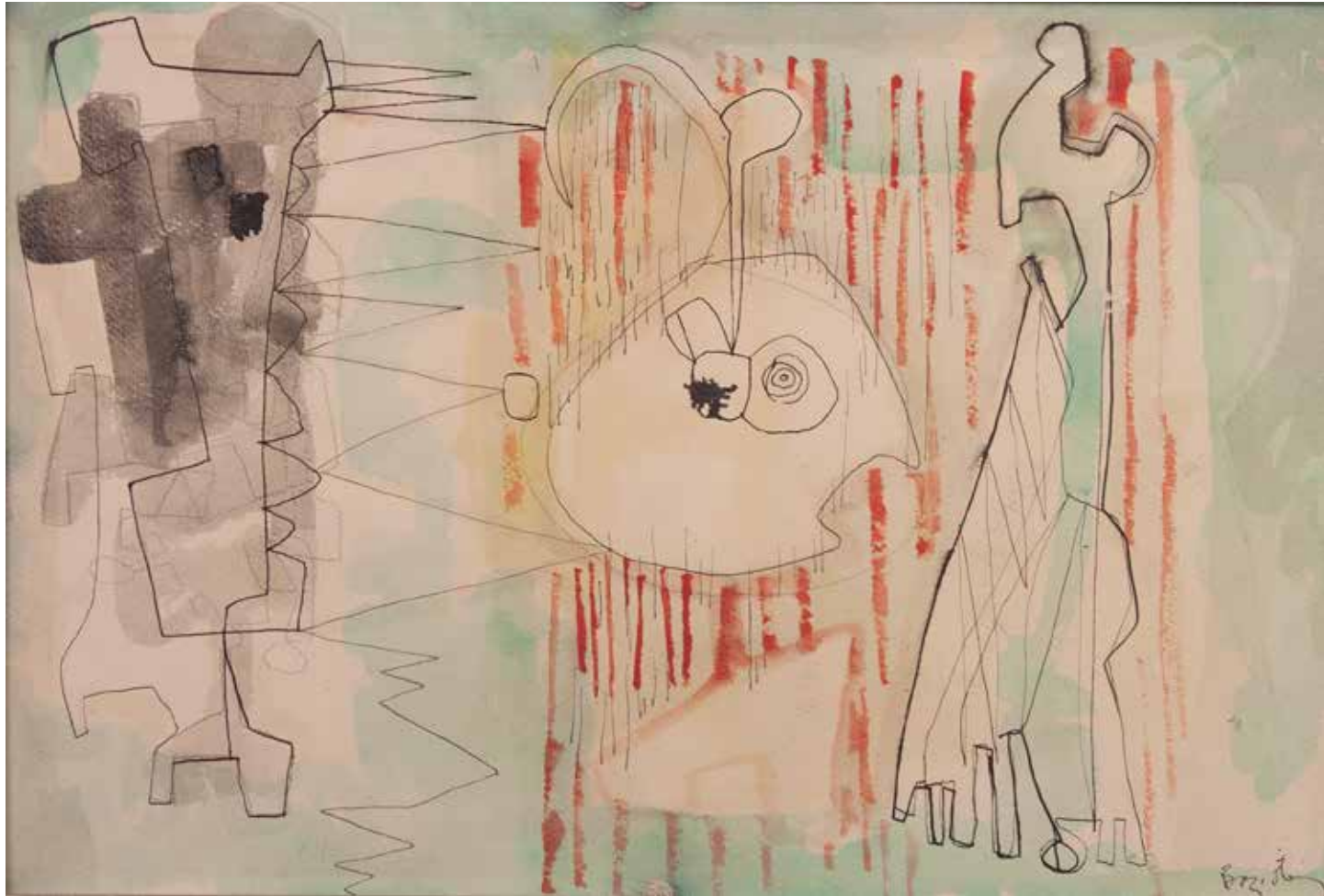


An abstract painting by Thomas Colville. The composition is dominated by a large, pale, oval shape in the center, resembling a face or a mask, with several small, dark, circular features. This central form is surrounded by thick, dark, diagonal strokes that crisscross the canvas. To the left, there are large, vibrant red shapes, some of which are framed by black, geometric, lattice-like structures. To the right, there are more red elements, including a cluster of small, red, circular dots. The background is a mix of dark blue, purple, and brown tones, with visible brushstrokes and a textured surface. The overall effect is one of dynamic tension and complex symbolism.

# The Art Show

## Thomas Colville Fine Art

February 28-March 3, 2019  
The Park Avenue Armory  
Park Avenue between 66th and 67th Streets  
New York City



**WILLIAM BAZIOTES**

**(American 1912-1963)**

***Figures at Curtain, 1947***

**Watercolor, ink and pencil on paper**

**12 x 18 inches**

**Signed *Baziotes* lower right**

**Signed, titled and dated .../WBaziotes 1947 on the reverse**

**Provenance:**

Gifted to David M. and Roberta R. Weinstein, Chestnut Hill, Mass., 1960

**Note:**

This work bears a label from the Seattle Art Museum on the reverse with the number 75-41.3.





Emil Bisttram  
(American 1895-1976)  
*The Storm*, 1939  
Oil on canvas  
28 x 32 inches  
Signed *Bisttram* lower right  
Titled and signed *The Storm/ E. Bisttram* on verso



**WERNER DREWES**  
**(American 1899-1985)**

*African Violet, 1947*

Oil on canvas

22 ½ x 17 ½ inches

Signed and dated *DREWES / 47* lower left

**Provenance:**

Wadsworth Atheneum Sumner Collection, Hartford, Connecticut, 1960-1998

Dr. James Lodge, San Juan Capistrano

Richard Norton Gallery, Chicago, Illinois

Art Exchange Gallery, San Francisco, Cali

**Exhibited:**

San Francisco International Art Expo, 2002.





**WERNER DREWES**

**(American 1899-1985)**

***Composition #268, 1942***

**Oil on canvas**

**30 x 41 ¾ inches**

**Signed with the artist's device and dated 1942 lower right**

**Signed and titled *Drewes C. 268* on the stretcher**

**Signed with the artist's device, dated and numbered again on the reverse**

**Provenance:**

Tilden-Foley Gallery, New Orleans

Acquired from the above by a Midwestern collector

**Note:**

There is a Cleveland Museum of Art label on the reverse



**WERNER DREWES**  
(American 1899-1985)  
*Lighthouse and Gulls*, 1948  
Oil on canvas  
28 x 18 inches  
Signed, inscribed and dated *DREWES / 48* lower right

**Literature:**  
Julie Novarese Pierotti, *Modern Dialect*, Dixon Gallery and Gardens, Memphis, Tennessee, 2012, pg. 117, plate 68, illustrated



**JOHN MILLARD FERREN**

**(American 1905-1970)**

***Plaster Relief No. 29, 1937***

**Carved and painted plaster**

**12 ½ x 15 inches**

**Signed and dated twice *FERREN 37* lower and upper left**

**Provenance:**

**Rhode Island Estate**





**ALBERT GALLATIN**

**(American 1881-1952)**

***Untitled, 1943-45***

**Oil on canvas**

**20 x 16 inches**

**Signed and dated *A.E. Gallatin 1943-45* on the reverse**

**Provenance:**

The artist.

Estate of William Kelly Simpson

Private collection, by descent.

Christie's, New York, 3 March 2011, lot 162, sold by the above.

Acquired by the late owner from the above.





**RAYMOND JONSON**  
**(American 1891-1982)**  
***Casein Tempera No. 9, 1941***  
**Tempera on paperboard**  
**35 1/2 x 22 1/2 inches**  
**Signed and dated *Jonson 41* lower right**  
**Signed, dated and titled *10/27-41* on the reverse**

**Provenance:**

The artist.

Private collection, Santa Fe, New Mexico.

Aaron Payne Fine Art, Santa Fe, New Mexico.

Acquired by the present owner from the above, 2013.



**RAYMOND JONSON**

**(American 1891-1982)**

***Oil no. 10*, 1946**

**Oil on canvas**

**40 x 40 inches**

**Signed and dated *Jonson/46* lower left**

**Signed, dated, and titled on verso**

**Provenance:**

Private collection, New York.

Christie's, New York, 30 November 1999, lot 127.

Private collection, Kentucky, acquired from the above.

Christie's, New York, 29 November 2007, lot 122.

Acquired by the present owner from the above

**Exhibited:**

New York, Berry-Hill Galleries, Inc., *Raymond Jonson: Pioneer Modernist Painter of New Mexico*, February 11-March 1, 1986, no. 20

Jacksonville, Florida, Museum of Contemporary Art, *Contemporary Visions: A Focus on Jacksonville Collections*, January 25-April 6, 2008

**Literature:**

Berry-Hill Galleries, Inc., *Raymond Jonson: Pioneer Modernist Painter of New Mexico*, exhibition catalogue, New York, 1986, p. 20, no. 20, cover illustration

*Arts Magazine*, vol. 60, 1986, p. 118, illustrated



**RAYMOND JONSON**

**(American 1891-1982)**

***Watercolor No. 7, 1947***

**Watercolor and gouache on paper laid down on board**

**27 ¼ x 19 ¼ inches**

**Provenance:**

The artist.

Estate of the artist.

Jonson Gallery, University of New Mexico, Albuquerque, New Mexico

Evelyn Weinstein, Santa Fe, New Mexico

Private collection, Winnetka, Illinois, by descent from the above.

Aaron Payne Fine Art, Santa Fe New Mexico

Acquired by the present owner from the above, 2013.





**GIORGIO MORANDI**  
(Italian 1890-1964)  
*Paesaggio, Casa bruciata*, 1959  
Watercolor and graphite on paper  
13 ¼ x 9 ¾ inches  
Signed and dated *Morandi 1959* lower left

**Provenance:**  
Alitalia Collection, Rome  
Sale: Finarte, Rome, 8 December 2009, lot 134



**GEORGE L.K. MORRIS**  
(American 1905-1975)  
*Abstraction*, circa 1938  
Oil on canvas  
24 x 16 inches  
Signed *Morris* lower left



**GEORGE L.K. MORRIS**

**(American 1905-1975)**

***Collage, 1941***

**Oil on canvas with wallpaper collage**

**18 x 20 inches**

**Signed *Morris* lower right**

**Signed, titled & dated *George L. K. Morris / Collage 1941* on reverse**

**Provenance:**

Estate of George L. K. Morris

Salander-O'Reilly Galleries, New York, New York, 2007

Private Collection, Massachusetts





**GEORGE L.K. MORRIS**

**(American 1905-1975)**

***Dismembered Disks*, circa 1947-49**

**Oil on canvas**

**19 x 23 ¼ inches**

**Signed *Morris* lower right**

**Signed, dated and inscribed with the title *Morris 1947-9***

**Provenance:**

The Downtown Gallery, New York

Circulating Gallery of the Dayton Art Institute, Dayton, Ohio

Private Collection, New Jersey

Sale: Christie's New York, December 5, 2013, lot 140

Acquired by the present owner at the above sale



**GEORGE L.K. MORRIS**  
(American 1905-1975)  
*Indian Composition*, circa 1935  
Oil on board  
13 x 15 ½ inches  
Signed *Morris* lower right

**Provenance:**  
Dr. Herbert Kayden and Dr. Gabrielle Reem



**GEORGE L.K. MORRIS**  
(American 1905-1975)  
*Indian Emblems*, 1937  
Watercolor on paper  
8 x 7 ¼ inches (sight)  
Monogrammed *GLKM* lower left

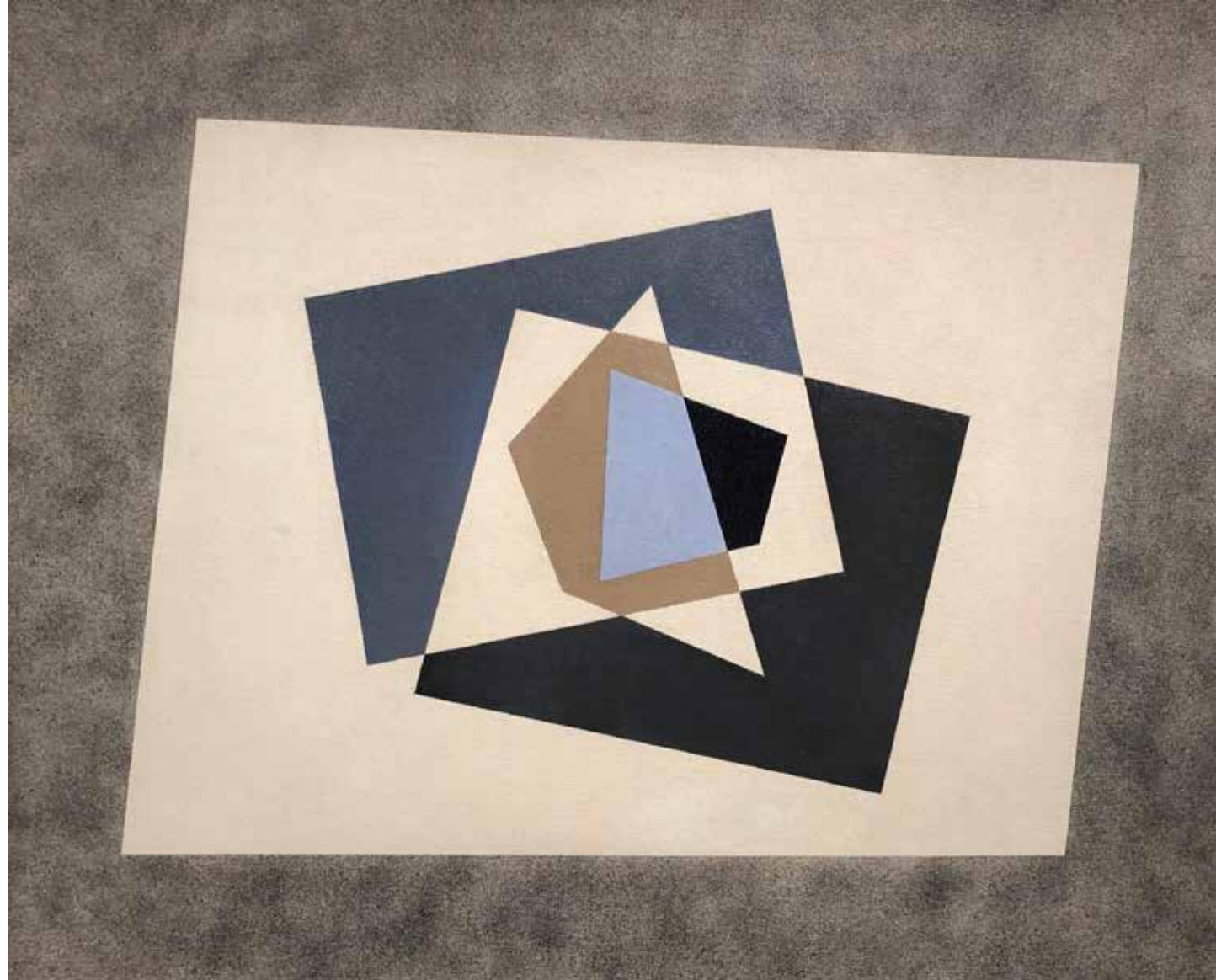
**Provenance:**  
The artist's estate  
Hirschl & Adler Galleries, New York, 1972  
Closson's, Cincinnati, 1973





**ELIE NADELMAN**  
**(American 1882-1946)**  
*Two Circus Women*  
**Polychromed papier-mâché**  
**Height: 11 ½ inches; Length: 9 ½ inches**

**Provenance:**  
By direct descent in the family of the artist, until 2013.  
Private collection, Newtown, Connecticut, until 2018.



**CHARLES GREEN SHAW**

**(American 1892-1974)**

***Composition, 1942***

**Oil on and pencil on masonite**

**32 x 39 ¼ inches**

**Signed and dated *Charles G. Shaw 1942* on the reverse**

**Provenance:**

Property from the estate of Dr. George S. Heyer Jr. (1930-2015).



**CHARLES GREEN SHAW**

**(American 1892-1974)**

*Equipoise*, 1962

**Oil on canvas**

**36 x 30 inches**

**Signed *Shaw* lower right**

**Note:**

Titled verso on labels for Galerie Scott-Faure, California, and Bertha Schaefer, New York.





CHARLES GREEN SHAW

(American 1892-1974)

*Flight Form*, 1963

Oil on canvas

48 x 39 ½ inches

Signed *Shaw* lower right

Titled and dated 1963 on the stretcher



CHARLES GREEN SHAW

(American 1892-1974)

*In the Open*, 1939

Oil and sand on canvas

38 1/2 x 26 1/2 1/4 inches

Signed and dated *Shaw / 1939* on verso

Estate stamped verso



**CHARLES GREEN SHAW**  
**(American 1892-1974)**  
***Untitled (Atomic Flight)*, 1945**

**Oil on canvasboard**

**32 x 50 inches**

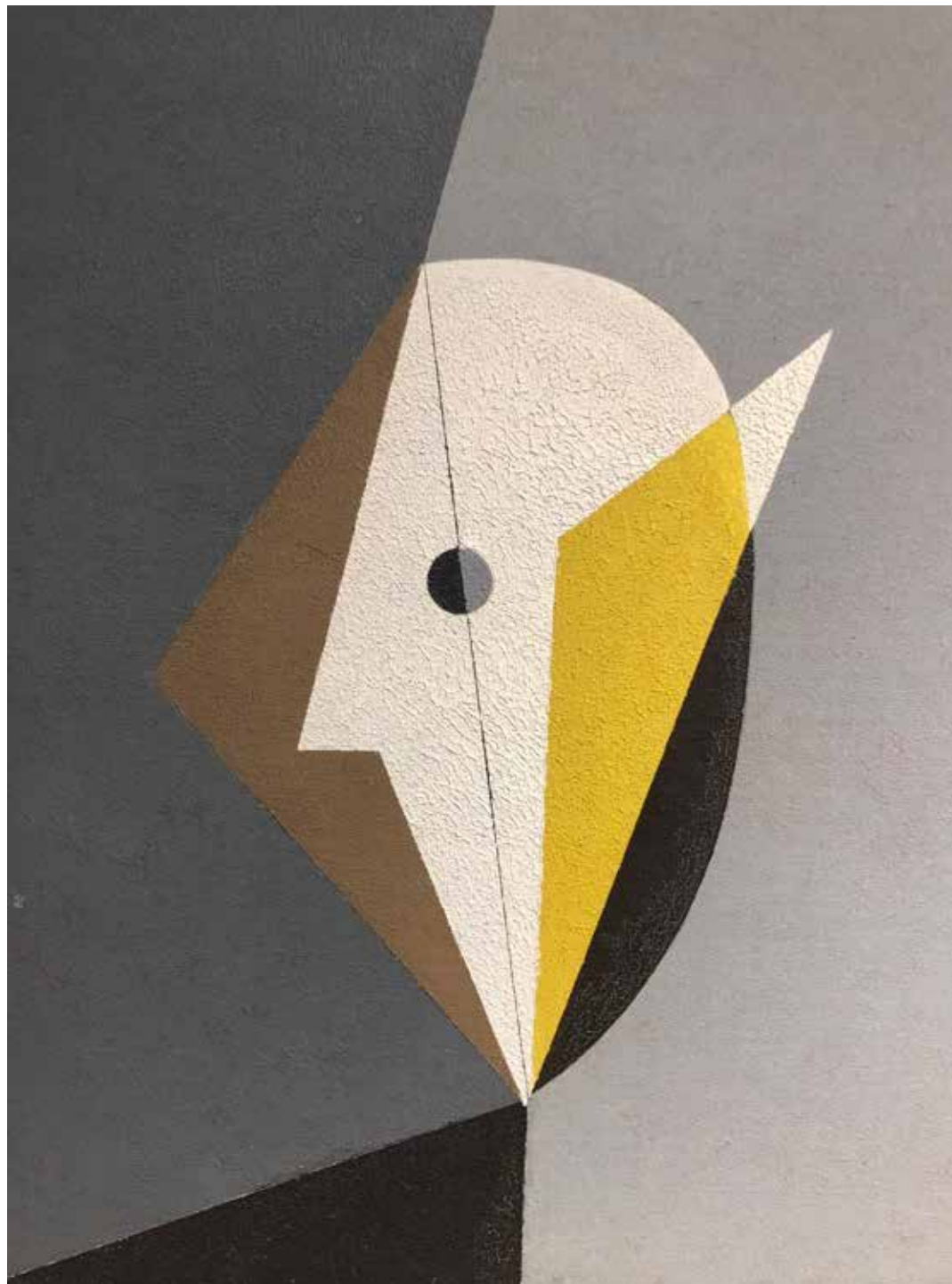
**Signed and dated *Charles G. Shaw 1945* on the reverse**

**Provenance:**

The artist.

Charles H. Carpenter, Jr., bequest from the above, 1974.

Gift to the present owner from the above, circa 2000.



**CHARLES GREEN SHAW**

**(American 1892-1974)**

***Untitled (I), 1945***

**Oil on composition board**

**16 x 12 inches**

**Signed and dated *Charles G. Shaw 1945* on the reverse**





**HENRY OSSAWA TANNER**  
**(American 1859 - 1937)**  
**Virgin Mary in Meditation, circa 1905**  
**Oil on board**  
**12 x 9 ½ inches**  
**Signed H.O. Tanner lower right**

**Provenance:**

Private Collection, Paris

Private Dealer, New York, New York

**Exhibited:**

Museum of Biblical Art, New York, New York, 2013-2014, circulating exhibition: *Ashe to Amen: African Americans and Biblical Imagery*, p. 47, Cat. No. 5 illus., exhibition traveled to; Reginald F. Lewis Museum of Maryland African American History & Culture, Baltimore, Maryland; Dixon Gallery and Gardens, Memphis, Tennessee.

**Literature:**

Leslie King-Hammond, Ph.D., *Ashe to Amen: African Americans and Biblical Imagery*. p. 46, Color Plate on p. 47