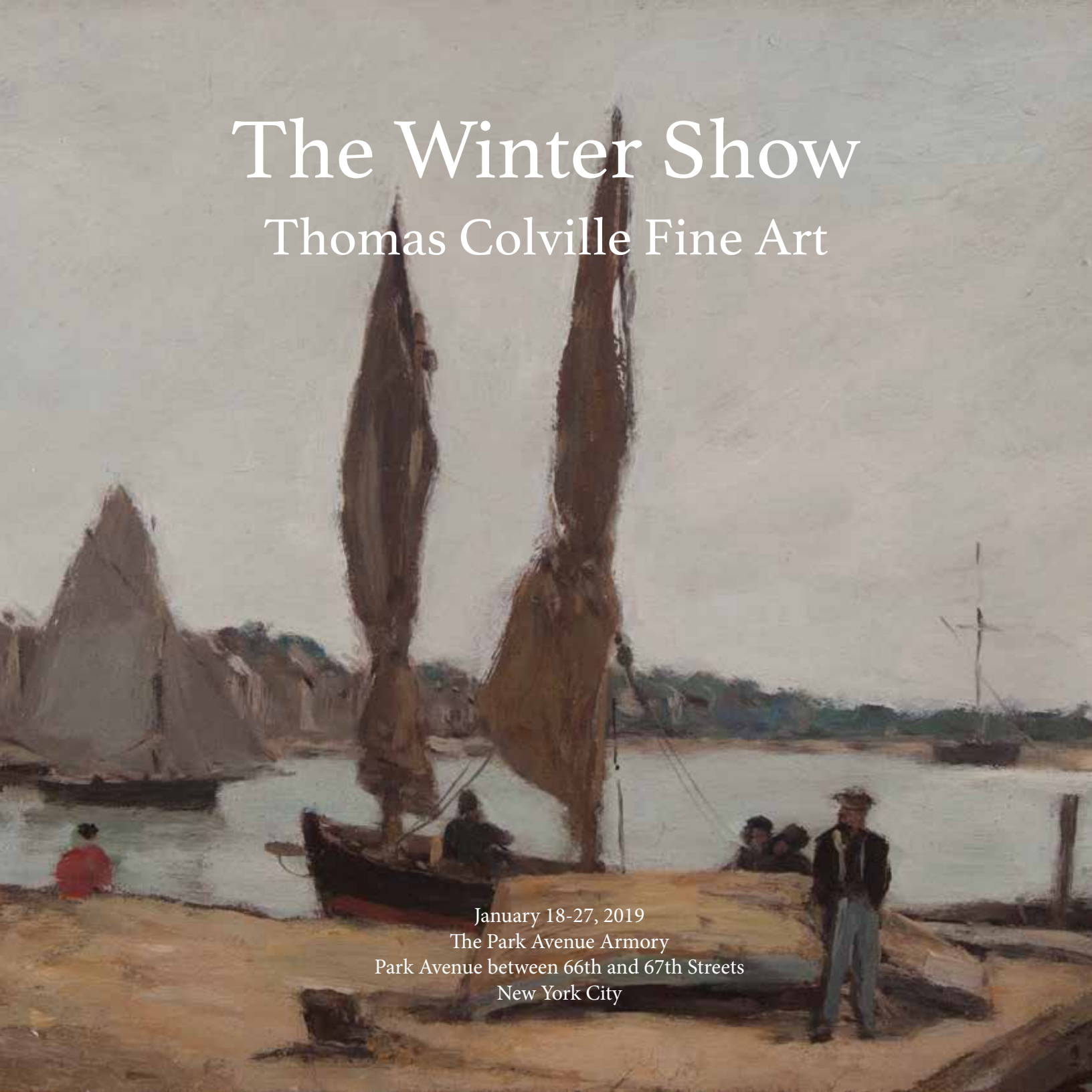


# The Winter Show

Thomas Colville Fine Art



January 18-27, 2019

The Park Avenue Armory

Park Avenue between 66th and 67th Streets

New York City



**PAUL-ALBERT BESNARD**  
(French 1849 – 1934)  
*After Tea*, circa 1885-1890  
Oil on canvas  
24 x 19 <sup>3</sup>/<sub>4</sub> inches  
Signed *Besnard* lower right



**EUGENE BOUDIN**  
**(French 1824-1898)**  
*Le Port de Trouville*, circa 1860-65  
7 x 9 7/8 inches  
Oil on board laid down on cradled panel  
Signed *E. Boudin* lower right

**Provenance:**

Paul Detrimont, Paris.

Stephen Hahn, New York.

Acquired from the above by William Kelly Simpson, September 1981.

**Literature:**

R. Schmit, *Eugène Boudin*, Paris, 1973, vol. I, p. 73, no. 229 (illustrated).



**PATRICK HENRY BRUCE**  
(American 1881-1936)  
*Still Life (Fruits and Vegetables)*, 1911  
Oil on canvas  
19 ½ x 24 inches  
Signed *Bruce* lower right

**Provenance:**

The artist.

Mrs. Helen Kibbey Bruce, wife of the above.

William Kennedy, circa 1960.

Mr. and Mrs. Henry M. Reed, Montclair, New Jersey, circa 1970.

Private collection, Pittsburgh, Pennsylvania.

By descent to the present owner.

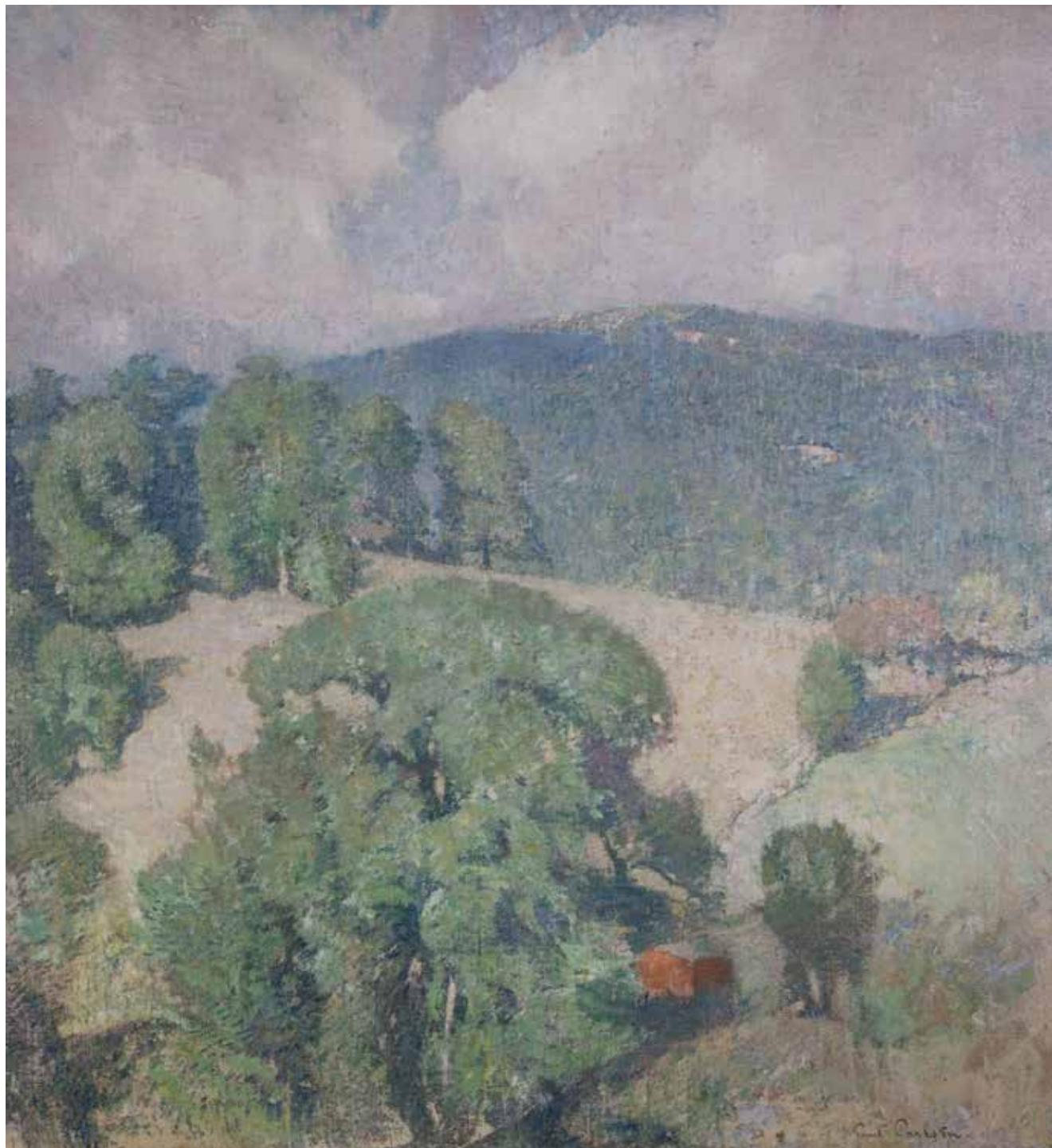
**Literature:**

H. Kramer, *Art; Sensual, Serene Sculpture*, New York Times, January 25, 1975, p. 23.

J. Tannenbaum, *Four Americans*, Arts Magazine, vol. 49, no. 7, March 1975, p. 10.

W.C. Agee, *Patrick Henry Bruce: A Major American Artist of Early Modernism*, Arts in Virginia, vol. 17, Spring 1977, pp. 15, 17, illustrated.

W.C. Agee, B. Rose, *Patrick Henry Bruce: American Modernist, A Catalogue Raisonné*, New York, 1979, p. 171, no. B43, illustrated.



**SÖREN EMIL CARLSEN**  
**(American 1853-1932)**  
***Connecticut Hillside*, circa 1920**  
**Oil on canvas**  
**29 x 27 inches**  
**Signed *Emil Carlsen* lower right**

**Provenance:**

Macbeth Gallery, New York, 1921  
Walter H. Schulze Memorial Collection  
Acquired as a gift from the above, 1930  
Art Institute of Chicago, 1930-2016

**Literature:**

“The Walter H. Schulze Memorial,” *Bulletin of the Art Institute of Chicago* 24, 1930, p. 79  
“Emil Carlsen,” *Bulletin of the Art Institute of Chicago* 26, 1932, p. 35  
*Art Institute of Chicago, Guide to the Paintings in the Permanent Collection*, 1932, p. 145  
*Art Institute of Chicago, Paintings in the Art Institute of Chicago: A Catalogue of the Picture Collection*, 1961, p. 67  
Donelson F. Hoopes, *The American Impressionists*, New York, 1972, pp. 7, 110–11, illustrated  
Emil Carlsen (1853-1932) *As Landscape Painter: A Chronological Introduction to Some of the Major Works and Their Critical Reception*, 1997  
Kim Lykke Jensen, *Soren Emil Carlsen: The Hammershoi of Manhattan*, Gylling, Denmark, 2008, fig. 55, p. 73, illustrated

**Exhibited:**

The Art Club of Philadelphia, *Exhibition of Oil Paintings by Lilian Westcott Hale, Emil Carlsen, and Charles H. Davis*, 1923, no. 11  
New York, The Macbeth Gallery, *Recent Paintings by Emil Carlsen, N.A.*, 1921  
*Art Institute of Chicago, Century of Progress: Exhibition of Paintings and Sculpture*, 1933, no. 436, p. 60, illustrated  
Storrs, Connecticut, William Benton Museum of Art, *Connecticut and American Impressionism*, 1980, no. 6, pp. 56, 63, illustrated



**SÖREN EMIL CARLSEN**  
(American 1853-1932)  
*Hearthstone*, 1922  
Oil on panel  
15 x 15 7/8 inches  
Signed and dated *Emil. Carlsen. 1922* lower left

**Provenance:**  
William Macbeth, Inc., New York  
Private collection, Dallas, acquired from the above.



**SÖREN EMIL CARLSEN**  
(American 1853-1932)  
*Roses and Oriental Porcelain*, circa 1895  
Oil on canvas  
24 <sup>7</sup>/<sub>8</sub> x 14 <sup>3</sup>/<sub>4</sub> inches  
Signed *Emil Carlsen* lower left

**Provenance:**  
Mr. and Mrs. Louis C. Krueger, at least until 1983

**Exhibited:**  
Evanston, Illinois, Terra Museum of American Art, *Two Hundred Years of American Painting from Private Chicago Collections*, 25 June – 2 September 1983, catalogue p. 20, no. 29 as *Still Life, Roses and Oriental Vases*



**EUGENE CARRIERE**  
**(French 1849-1906)**  
*The Addition*  
Oil on canvas  
9 5/8 x 7 3/8 inches  
**Signed *Eugene Carriere* upper right**

**Provenance:**  
*Albert Camion Collection*

**Literature:**  
Gustave Geffroy, *L'oeuvre d'Eugène Carrière*, Paris, 1902, p. 24, fig. p. 22  
Camille Mauclair, *L'ame d'Eugène Carrière*, in "L'Art Décoratif", Paris, 1902, fig. p. 68  
Charles Morice, *Eugène Carrière : l'homme et la pensée, l'artiste et son oeuvre; essai de nomenclature des oeuvres principales*, Paris, 1906, p. 248  
Anne-Marie Berryer, *Eugène Carrière, mémoire de doctorat de l'Université de Bruxelles*, Brussels, 1936, n°171  
Véronique Bonnet-Nora, *Eugène Carrière, Catalogue raisonné de l'oeuvre peint*, Paris, 2008, p. 105, n°202





**WILLIAM MERRITT CHASE**  
**(American 1849-1916)**  
*Young Boy with White Ruffled Collar*  
Oil on canvas  
10 x 8 inches  
Signed *Wm M. Chase.* upper right

**Provenance:**

Esther Meyer Cohen and George S. Cohen, Houston, Texas, circa 1921.  
Pauline Meyer Hecht, by descent, 1978.  
By descent to the present owners, 2009.  
Estate of Pauline Meyer Hecht, until 2012

**Note:**

The work is included in Ronald G. Pisano's *The Complete Catalogue of Known and Documented Work by William Merritt Chase (1849-1916)*, addendum file, No. OPAA.613 (Kellen Archives, Parsons New School, New York) and is accompanied with a letter from Mr. D. Frederick Baker.



**SIR GEORGE CLAUSEN**

**(British 1852-1944)**

***Still Life of Carnations***

**Oil on canvas**

**12 ¾ x 10 ¾ inches**

**Signed *G. Clausen* lower right**

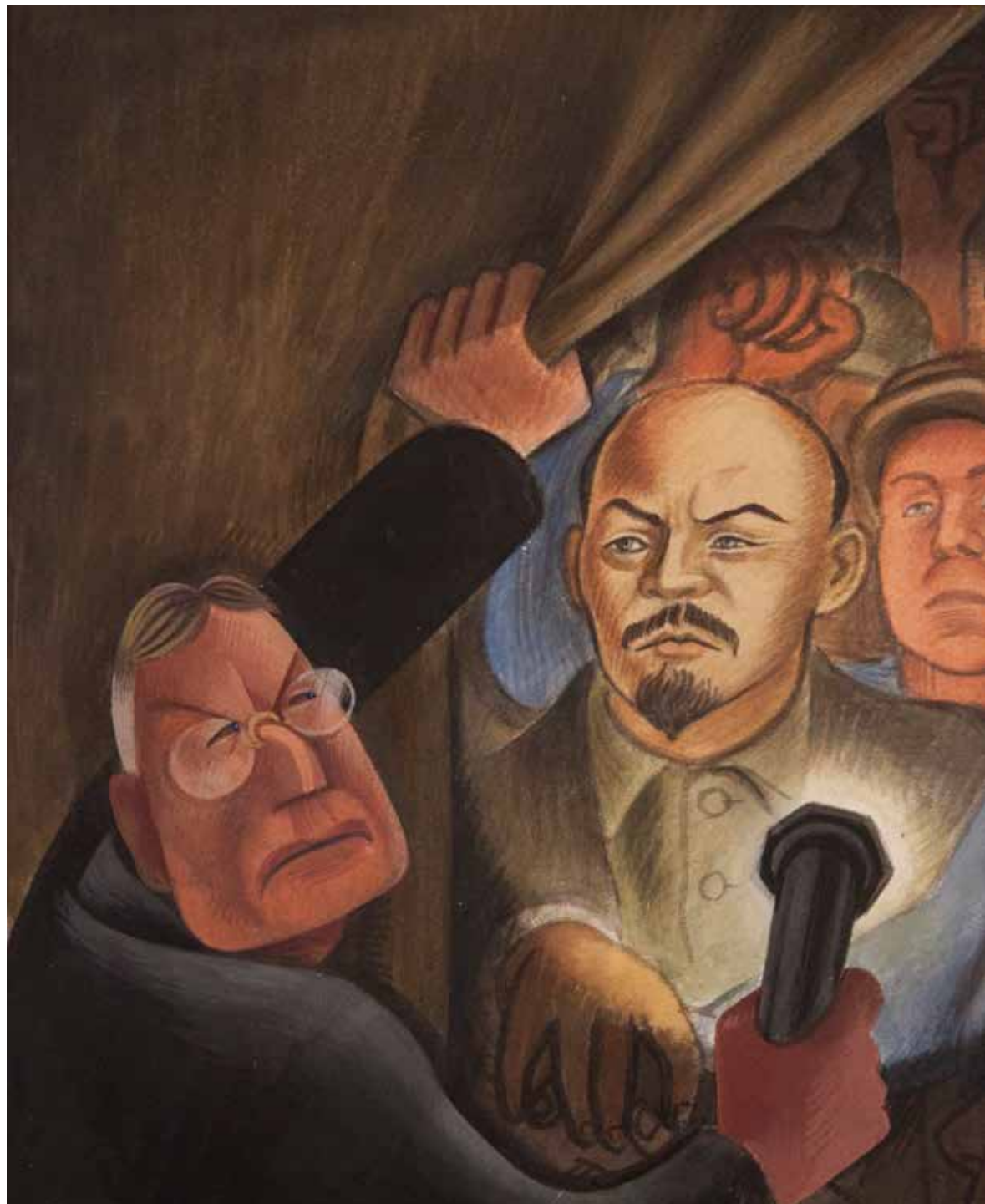
**Provenance:**

Sale: Christie's, London, November 12, 1976, lot 27, illustrated (titled *Carnations in Two Glass Vases*)

(Probably) Sale: Sotheby's, Belgravia, June 27, 1978, lot 126

**Exhibited:**

London, Leicester Galleries, *Paintings and Drawings by George Clausen RA*, 1909, no. 11



**MIGUEL COVARRUBIAS**

**(Mexican 1904-1957)**

***Rockefeller Discovering the Rivera Murals, 1933***

**Gouache and ink on paper**

**14 x 10 inches**

**Inscribed *This is the cause of my dispute with Vanty Fair / Covarrubias* lower right**

**Provenance:**

Forbes Collection, New York

Sale: Sotheby's, New York, May 29, 1985, lot 323

**Exhibited:**

*South of the Border: Mexico in the American Imagination, 1914-1947*, Yale University Art Gallery, New Haven, September 10-November 21, 1993; Phoenix Art Museum, December 26, 1993-February 13, 1994; New Orleans Museum of Art, May 7-July 17, 1994; Museo de Monterrey, Mexico, September 9-November 20, 1994.

*Shared Traditions: African American Modernists and the Mexican Muralists*,

The American Federation of Arts; The Studio Museum in Harlem, New York, September 15-December 1, 1996; African American Museum, Dallas, January 3-March 2, 1996; Edsel and Eleanor Ford House, Grosse Pointe Shores, Michigan, March 26-May 25, 1996; California Afro-American Museum, Los Angeles, June 20-August 17, 1994; Diggs Gallery, State University, Winston-Salem, North Carolina, September 12-November 9, 1996; Dayton Art Institute, Dayton, Ohio, December 5, 1997-February 1, 1998; The Mexican Museum, San Francisco, February 27-April 26, 1998.

*In the Spirit of Resistance: African American Modernists and the Mexican Muralist School*, the Studio Museum in Harlem, New York, September 15-December 1, 1996; African American Museum, Dallas, January 3-March 2, 1997; Edsel and Eleanor Ford House, Grosse Pointe Shores, Michigan, March 26-May 25, 1997; Diggs Gallery, State University, Winston-Salem, North Carolina, September 12-November 9, 1997; Dayton Art Institute, Dayton, Ohio, December 5, 1997-February 8, 1998; The Mexican Museum, San Francisco, California, February 27-April 26, 1998, reproduced.

*200 Years of American Art From the Forbes Magazine Collection*, The Forbes Magazine Galleries, New York, May 26-September 4, 1999, No. 63.

*Nexus New York: Latin/American Artists in the Modern Metropolis*, El Museo del Barrio, October 17, 2009-February 28, 2010.



**LEON DABO**  
(American 1864-1960)  
*Autumn Still Life*  
Oil on canvas  
23 ½ x 29 ½ inches  
Signed with monogram lower right

Provenance:  
Goodwin House Foundation



**PASCAL DAGNAN-BOUVERET**

**(French 1852-1929)**

***Lady in Pink with her Child, 1882***

**Oil on canvas**

**25 x 32 inches**

**Signed and dated *PAJ Dagnan 1882* lower right**

**Provenance:**

Hammer Galleries

Mr. Jeffrey and Mrs. Jill Stoff, Wellesley, Massachusetts

**Exhibited:**

*Catalogue des Oeuvres de M. Dagnan-Bouveret, Peintures, Paris, 1930,*

*Librairie du Bulletin de L'Academie des Beaux-Arts, pg. 23 as *Jeune femme en rose avec son enfant.**



**CHARLES-FRANÇOIS DAUBIGNY**

**(French 1817-1878)**

***Auvers-sur-Oise, 1864***

**Oil on panel**

**15 ½ x 26 inches**

**Signed and dated *Daubigny 1864* lower left**

**Provenance:**

Collection of William Hood Stewart, until 1898

Henry Reinhardt Paintings and Works of Art

V. S. Logan, Chicago, Illinois, 1900

Mrs. Marianne H. Low, New York, circa 1968

**Exhibited:**

New York, American Art Galleries, *Modern Masterpieces gathered by the Late Connoisseur William H. Stewart*,

February 3-4, 1898, no. 35, illustrated

**Note:**

Certificate of authenticity from Boussod, Valadon & Cie., dated July 9, 1900.



**CHARLES DEAS**  
(American 1818-1867)  
*Western Landscape with Waterfall and Figure, 1847*  
Oil on paper or card  
6 x 9 inches  
Signed & dated *Charles Deas 1847* lower left

**Provenance:**  
A private New Mexico collection.



**MAURICE DENIS**  
**(French 1870-1943)**  
*The Public Garden*, circa 1900  
Oil on artist's board  
9 ¼ x 13 inches  
Monogrammed *MAUD* lower right

**Provenance:**  
Galerie Paul Vallotton, Lausanne, 1983 (no. 12474 in their archives)

**Notes:**  
This picture is to be included in the forthcoming catalogue raisonné being compiled by Claire Denis and Fabienne Stahl at no. 900.0023\* and is accompanied by a letter of authenticity.





**GUY PENE DU BOIS**  
**(American 1884-1958)**  
*Sportswomen, France, 1926*  
Oil on panel  
21 ¾ x 18 inches  
Signed and dated *Guy Pene du Bois '26* lower left

**Provenance:**

Estate of the Artist  
Graham Galleries, New York  
Owen Gallery, until 1994

**Exhibited:**

London, Arts Council of Great Britain, *Modern Spirit*, 1977, no. 113  
New York, Graham Gallery, *Guy Pene du Bois: Painter, Draftsman and Critic*, March 27-May 12, 1979, no. 8



**HENRI FANTIN-LATOURE**

**(French 1836-1904)**

***Fleurs des Champs*, 1878**

**Oil on canvas wrapped around panel**

**9 ¾ x 10 ½ inches**

**Signed and dated *Fantin 78* lower left**

**Provenance:**

Edwin Edwards, London

Sir Robert Leicester Harmsworth, United Kingdom

Etienne Bignou, Paris

Private collection, Dallas.

**Exhibited:**

Mme. Fantin-Latour, *Catalogue de l'oeuvre complet de Fantin-Latour*,

Floury Editeur, Paris, 1911, p. 94, No. 894;

Frank Gibson, *The Art of Fantin-Latour: His Life and Work*, Drane's, Ltd.,

London, 1924, p. 101, pl. 28.

**Note:**

This picture is to be included in the forthcoming catalogue raisonne of the artist's work being compiled by Brame & Lorenceau.



**VICTOR GABRIEL GILBERT**

(French 1847-1933)

*The Tuileries Garden, 1889*

Oil on panel

16 x 19 1/4

Signed and dated *V.Gilbert 1889*, lower right.



**WILLIAM GLACKENS**

**(American 1870-1938)**

***Washington Square – The Green Dress, circa 1910***

**Oil on canvas**

**13 1/8 x 16 1/4 inches**

**Signed *William Glackens* lower right**

**Provenance:**

The artist

Estate of the above

Kraushaar Galleries, New York

Acquired by a Private collection, San Francisco, California, 1958

By descent to a Private collection, San Francisco, California

Gifted to the present owner, 2017

**Exhibited:**

(possibly) Omaha, Nebraska, Joslyn Art Museum, 1951.



**CARL HAAG**  
(German, 1820-1915)  
*A Nubian Boy, 1874*  
Watercolor and ink on paper  
20 1/2 x 14 1/2 inches  
Signed and dated *Carl Haag 1874* lower right

**Provenance:**  
The estate of Kenneth Jay Lane.



**HOWARD HILDEBRANDT**  
(American 1903-1959)  
*In the Garden*  
Oil on canvas  
20 x 16 inches  
Signed *H. Hildebrandt* lower left

Exhibited:  
Milch Galleries, New York



**WINSLOW HOMER**  
**(American 1836-1910)**  
***Orange Tree, Nassau, 1885***  
**Watercolor on paper**  
**14 x 20 1/2 inches**  
**Signed and dated *Winslow Homer 1885* lower left**

**Provenance:**

Reichard & Co., New York, 1885  
Russell Sturgis, New York, probably 1885  
By descent to Edward Sturgis, New York, 1909  
By descent to Agnes Sturgis, Pleasantville, New York, 1946  
Knoedler & Co., 1946  
Wildenstein Gallery, New York, 1946-1947  
Mr. & Mrs. Lawrence A. Fleischman, Detroit, Michigan, 1954  
Priscilla Alden Bartlett Henderson, circa 1959  
Sale: Sotheby Parke Bernet, April 25, 1980, lot 38, illustrated in color  
Lano Art Association, New York (acquired at the above sale)  
Helen Marx, 1986 – 2011

**Exhibited:**

New York, Reichard & Co., *Water-Color Views by Winslow Homer*, (c. 18 - c.31), December 1885, no. 8 as *Orange Tree*  
New York, New York Watercolor Club, *Thirteenth Annual Exhibition*, November- December 1902, no. 17 as *Orange Tree, Nassau*  
New York, Wildenstein & Co., *A Loan Exhibition of Winslow Homer for the Benefit of the New York Botanical Garden*, 19 February – 22 March 1947, no. 62 as *Orange Trees and Gate* Houston, Texas, Allied Arts Association Annual Art Festival, Paintings, *Watercolors and Drawings by Winslow Homer, 1836-1910*, November 1952, no. 25  
Washington, D.C., National Gallery of Art; Fort Worth, Texas, Amon Carter Museum; New Haven, Connecticut, Yale University Art Gallery, *Winslow Homer Watercolors*, March-November 1986, no. 123



**GEORGE INNESS**

**(American 1825-1894)**

***Summer, Montclair, 1887***

**Oil on canvas**

**38 x 28 ½ inches**

**Signed and dated *G. Inness 1887* lower right**

**Provenance:**

Mr. and Mrs. John J. Albright, Buffalo, New York, by 1907

George Bates Harrington, Chicago, Illinois, 1925-1960

By descent to Miss Mary Bates Harrington, Chicago, Illinois, until 1960

Estate of the above

Sold by the above at Christie's, New York, 25 May 2000, lot 43

Acquired by Edgar M. Bronfman, 2000-2013

Estate of Edgar M. Bronfman, 2013-2016

**Exhibited:**

Buffalo, New York, Buffalo Fine Arts Academy, Albright Art Gallery, *Loan Collection of Paintings Owned by Citizens of Buffalo*, October 10-24, 1907, no. 75, illustrated.

Buffalo, New York, Buffalo Fine Arts Academy, Albright Art Gallery, *Seventh Annual Exhibition of Selected Paintings by American Artists*, May 21-September 2, 1912, pp. 23, 39, no. 79, illustrated.

St. Louis, Missouri, City Art Museum, *Seventh Annual Exhibition of Selected Paintings by American Artists*, September 1912, p. 48, no. 62 (as Summer).

Buffalo, New York, Buffalo Fine Arts Academy, Albright Art Gallery, *Paintings by the Late George Inness Owned by Buffalonians*, December 14, 1918-March 1919.

Buffalo, New York, Buffalo Fine Arts Academy, Albright Art Gallery, *Exhibition of Paintings and Tapestries Collected by Mr. and Mrs. John J. Albright*, June 2-September 6, 1921, pp. 5, 15, no. 1, illustrated.

Buffalo, New York, Buffalo Fine Arts Academy, Albright Art Gallery, *George Inness Centennial Exhibition, 1825-1925*, October 30-November 30, 1925, no. 34.

Chicago, Illinois, Terra Museum of American Art, by 1995-2000, on loan.





**JOHN FREDERICK KENSETT**

**(American 1816-1872)**

***Bash Bish Falls*, circa 1860**

**Oil on canvas**

**18 x 22 1/4 inches**

**Signed with monogram lower right**

**Provenance:**

Hirschl & Adler Galleries, Inc., New York, until 1977

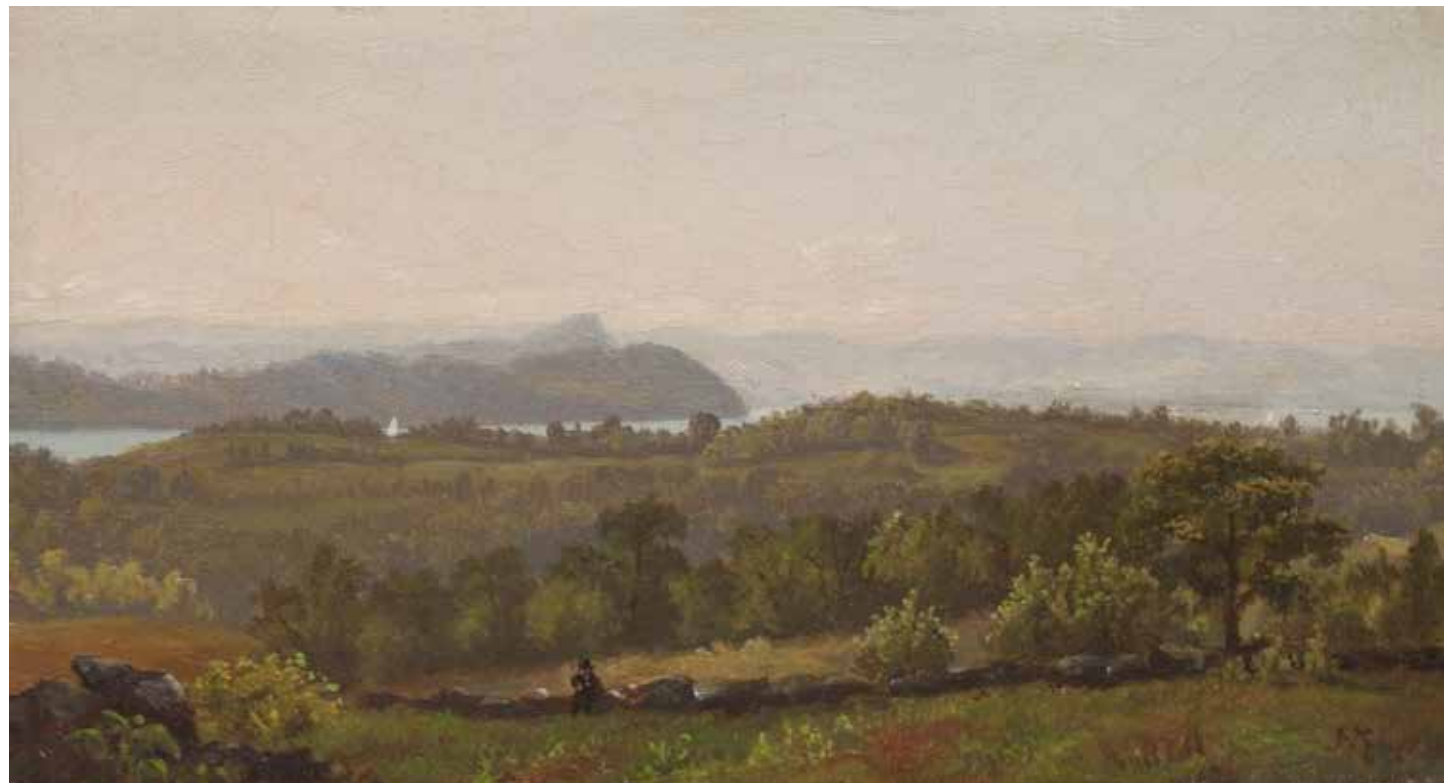
Charles & Alma Shoemaker, Los Angeles, acquired from the above, until 2007

**Exhibition:**

Los Angeles, California, Los Angeles County Museum of Art, *John F. Kensett: An American Master*, 11 July – 8 September 1985.

**Note:**

This painting will be included in the forthcoming catalogue raisonné of the artist's work by John Driscoll. Ref. 070309.0087



**JOHN FREDERICK KENSETT**

**(American 1816-1872)**

***Hudson River Looking Toward Haverstraw, circa 1855***

**Oil on canvas**

**5 x 9 inches**

**Initialed monogram *JFK* lower right**

**Provenance:**

Ira Spanierman Gallery, New York

Private Collection, Maine, 1969-2006



**JOHN FREDERICK KENSETT**

**(American 1816-1872)**

***Summer in New Hampshire, 1852***

**Oil on canvas**

**17 3/16 x 25 1/8 inches**

**Monogrammed & dated '52 lower right center**

**Provenance:**

Private Collection, Maryland, until 2004

**Note:**

This painting will be included in the forthcoming catalogue raisonné of the artist's work by John Driscoll. Ref. 092508.0077



ROCKWELL KENT  
(American 1882-1971)

*Greenland*

Ink on paper

4 ½ x 11 ½ inches

Stamped on the reverse *For use as ... Original drawing the property of Rockwell Kent and to be returned to him at Au Sable Forks, New York*

Provenance:  
The artist.



**ROCKWELL KENT**  
**(American 1882-1971)**  
*Mount Equinox, Winter, 1921*  
**Oil on panel**  
**12 x 16 inches**

**Provenance:**  
The Artist  
Kathleen W. Kent, the Artist's wife, until October 1990  
Gifted to David Kent, the Artist's grandson, October 1990-2017



**JOHN LA FARGE**

(American 1835-1910)

*Water Lily with Green and Red Pads*, circa 1883

Pencil, watercolor and gouache on heavy wove paper

Sight: 5 ½ x 9 ½ inches

Sheet: 11 ¾ x 15 ½ inches

**Provenance:**

The Artist

Gifted from the above to Moritz Bernard Philipp, 1884

James Graham Gallery, New York, by the early 1970's

Sold from the above to a private collection, New England, until 2014

**Literature:**

James Yarnall, *Nature Vivante: The Still Lifes of John La Farge*, New York, The Jordan-Volpe Gallery, Inc., 1995, pg. 142, no. 76, illustrated

**Exhibited:**

Society of American Artists, *Annual Exhibition*, 1884, no. 54

Moore's Art Gallery, *Catalogue of a Collection of Oil and Water Color Paintings, by John La Farge*, 26-27 March 1884, lot 49



**HENRI LE SIDANER**

**(French 1862-1939)**

***Camille Le Sidaner, Epouse de L'Artiste, circa 1907***

**Graphite pencil, color pencil and conte crayon on paper**

**5 ¾ x 6 ⅞ inches**

**Signed *Le Sidaner* lower left**

**Provenance:**

Galleries Maurice Sternberg, Chicago, Illinois

**Literature:**

Camille Maclair, *Le Sidaner*, G. Petit, Paris, 1928, illustrated pg. 58

Yann Farinaux, preface by Rémy La Sidaner, *Le Sidaner: L'Oeuvre peint et gravé*, Paris, André Sauret, 1989, p. 325, no. 968, illustrated

**Note:**

Postcard from Henri Le Sidaner, to Monsieur Louis Le Sidaner the artist's grandson.



**LUIGI LOIR**

**(French 1845-1916)**

***Sur la Plage, Deauville, circa 1880***

**Gouache with pastel**

**13 ½ x 10 inches**

**Signed & inscribed *LOIR LUIGI n. 105* lower right**

**Provenance:**

Knoedler & Company, New York

Hirschl & Adler Galleries, New York

Maxwell Galleries, San Francisco





**MARY FAIRCHILD MACMONNIES LOW**

**(American 1858-1946)**

***The Garden, 1896***

**Oil on canvas**

**17 5/8 x 32 inches**

**Signed, dated and inscribed *MacMonnies 96 Giverny* upper right**

**Provenance:**

Private collection, Connecticut

**Exhibited:**

Pennsylvania Academy of the Fine Art, *Sixty-Sixth Annual Exhibition, 1896*, no. 219

American Fine Arts Society, *Nineteenth Exhibition of the Society of American Artists, March 28-May 1, 1897*, no. 125



**HENRI MARTIN**  
**(French 1860-1943)**  
*Tapis de Fleurs Bleues avec Marguerites*  
**Oil on canvas**  
**12 1/8 x 16 1/8 inches**

**Provenance:**  
Renee Bourdiol Collection, Dax  
By descent through the family

**Note:**  
This painting accompanied by a certificate of authenticity by Cyrille Martin.



**PIERRE EUGENE MONTEZIN**  
(French 1874-1946)  
*The Seine at St. Mammès, circa 1925*  
Oil on canvas  
28 <sup>3</sup>/<sub>4</sub> x 28 <sup>3</sup>/<sub>4</sub> inches  
Signed *Montezin* lower right  
Titled *St. Mammès* on the reverse



**EDWARD MORAN**

**(American 1829-1901)**

***Union Volunteers Hospital, 1865***

**Oil on canvas**

**16 x 28 inches**

**Signed and dated *E. Moran 1865* lower left**

**Provenance:**

Estate of Samuel Bradford Fales (1804-1880), 1865-1880

Purchased from the estate by Lou Emma Halliburton, 1880

By descent in the family to the Estate of Clive Bridgman, Providence, Rhode Island, until 2018.



**ELIE NADELMAN**  
**(American 1882-1946)**  
*Two Circus Women*  
**Polychromed papier-mâché**  
**Height: 11 ½ inches; Length: 9 ½ inches**

**Provenance:**  
By direct descent in the family of the artist, until 2013.  
Private collection, Newtown, Connecticut, until 2018.



**EMIL NOLDE**  
**(German 1867-1956)**  
***Tulpen and Kakteen***  
**Gouache on wove paper**  
**10  $\frac{3}{8}$  x 18 inches**  
**Signed *Nolde* lower left**

**Provenance:**

Nolde Foundation

On consignment through Knoedler & Co., New York, February 16, 1967

Sold to a private collection, April 11, 1967

Private Massachusetts Collection

**Literature:**

M. Knoedler & Co. records, approximately 1848-1971, The Getty

Research Institute, Los Angeles, Accession no. 2012.M.54, Series III. Commission Books, 1879-1973, Box 99,

Commission Book No. 6, CA 7492



**JEAN-FRANÇOIS RAFFAËLLI**  
(French 1850-1924)  
*Boulevard Malesherbes, Paris, circa 1890*  
Oil on board  
15 ¼ x 21 ¾ inches  
Signed *J.F. RAFFAËLLI* lower right

**Provenance:**  
Estate of John F. Norwood, St. Louis, Missouri



**DIEGO RIVERA**  
(Mexican/American 1886-1957)  
*Man in a Sombrero, 1936*  
24 x 18 inches  
Watercolor on paper  
Inscribed *To Mrs Richard Winter / Diego Rivera / 26 Aug 1936* lower left





**THEODORE ROUSSEAU**

**(French 1812-1867)**

***Soleil Couchant sur les sables de Saint-Jean-de-Paris*, circa 1864-67**

**Oil on canvas**

**65 x 81 centimeters**

**Remnants of signature *TH Rousseau* lower left**

**Note:**

This picture is accompanied by a letter of authenticity from Michel Schulman and relates to a larger painting of the same subject (Michel Schulman no. 603) and a sketch of the composition (Michel Schulman no. 732).



**JULIUS LEBLANC STEWART**  
(American 1855-1919)  
*Twilight on the Terrace, Paris, 1877*  
Oil on panel  
29 ¼ x 39 inches  
Signed and dated *JL Stewart 1877* upper left

**Provenance:**  
A Massachusetts estate.



**MAX WEBER**

**(American 1881-1961)**

***Still Life of Fruit, Vase and Cup, 1910***

**Pastel on paper laid down on heavy card**

**21 ½ x 18 ½ inches**

**Signed *Max Weber* '10 lower right**

**Stamped *MW* by the artist on the reverse**



**EDWIN LORD WEEKS**

*The Bazaar at Oudeypore, circa 1893*

Oil on canvas

18 x 22 inches

Signed with estate stamp *E. Weeks* lower right

Stenciled and numbered 224 by the estate on the reverse

**Provenance:**

Estate of the Artist

A.I. Smith, 1905

**Exhibited:**

New York, American Art Galleries, *The Works of the Late Edwin Lord Weeks*, 11-17 March 1905, as *At the Shoemaker's*, no. 224



**OLGA WEISS**  
(German 1885-90)  
*White Blossoms and Butterflies,*  
circa 1885-90  
Oil on panel  
6 <sup>7</sup>/<sub>8</sub> x 10 <sup>5</sup>/<sub>8</sub> inches  
Indistinctly signed lower right



**JAMES ABBOTT MCNEILL WHISTLER**  
**(American 1834-1903)**  
***Women and Children outside a Brittany Shop, circa 1888***  
**Watercolor on linen**  
**5 x 8 ½ inches**

**Provenance:**

In the artist's studio at his death

Miss R. Birnie Philip, 1903 (the artist's sister-in-law)

Colnaghi & Co., London, acquired from above, March 1943

Villiers Davis, London, acquired from above, 30 April 1943-1985

Sale: Christie's, New York, 6 December 1985, lot 182, color illustrated

Acquired by the present owner from above sale, 1985-2012

**Literature:**

Margaret MacDonald, *James McNeill Whistler: Drawings, Pastels and Watercolors: A Catalogue Raisonné*, New Haven, Connecticut, 1995, p. 432, no. 1187, illustrated



**JOHN WHORF**  
**(American 1903-1959)**  
***Dancers*, circa 1950**  
**Watercolor on paper**  
**21 ¼ x 14 inches**  
**Signed *John Whorf* lower right**

**Provenance:**  
Milch Galleries American Art, New York  
Private Collection, New York



JOHN WHORF  
(American 1903-1959)  
*Middle Eastern Scene*  
Watercolor on paper  
12 x 14 inches  
Signed *John Whorf* lower left





**JOHN WHORF**  
(American 1903-1959)  
*New York Wharf*  
Watercolor on paper  
14 7/8 x 21 3/4 inches  
Signed *John Whorf* lower left in pencil  
Signed *John Whorf* lower right

**Provenance:**  
Private Collection, New York



**GUY C. WIGGINS**  
(American 1883-1932)  
*Winter on the Avenue*  
Oil on canvasboard  
11 ¾ x 9 inches  
Signed *Guy Wiggins* lower left

**Notes:**

A letter of authentication from Guy A Wiggins, the artist's son, accompanies this picture.



**IRVING RAMSEY WILES**  
**(American 1861-1948)**  
*Scallop Boats, Peconic Bay, circa 1915*  
Oil on panel  
10 x 14 inches  
Signed *Irving R. Wiles* lower left