

Palm Beach Jewelry, Art & Antiques Show

Thomas Colville Fine Art

February 14-20, 2018

The Palm Beach County Convention Center | 650 Okeechobee Blvd. | West Palm Beach, Florida 33401

R. Miley



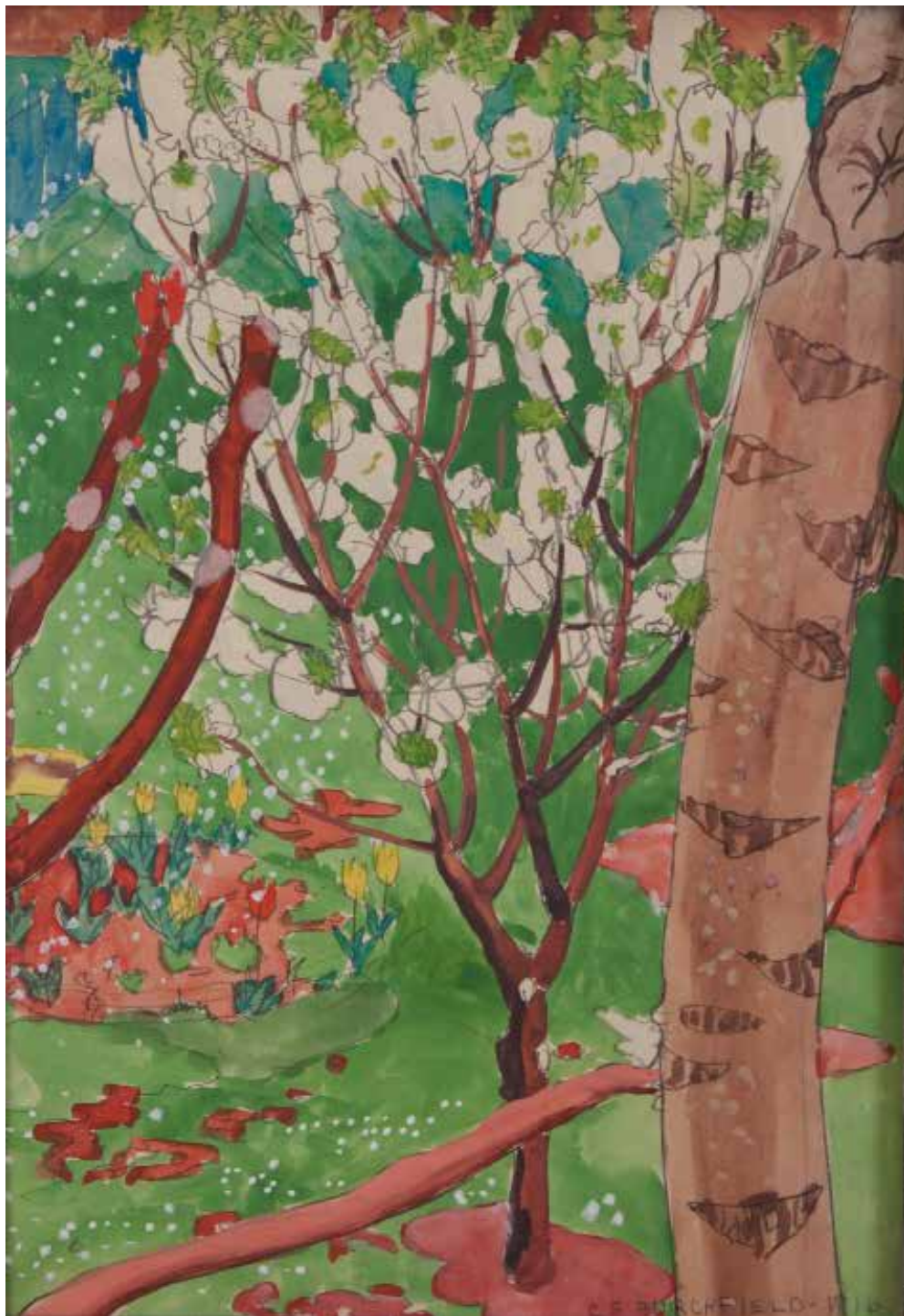
PAUL-ALBERT BESNARD
(French 1849 – 1934)
After Tea, circa 1885-1890
Oil on canvas
24 x 19 ³/₄ inches
Signed *Besnard* lower right



EUGENE BOUDIN
(French 1824-1898)
***Le Port de Trouville*, circa 1860-65**
7 x 9 7/8 inches
Oil on board laid down on cradled panel
Signed *E. Boudin* lower right

Provenance:
Paul Detrimont, Paris.
Stephen Hahn, New York.
Acquired from the above by William Kelly Simpson, September 1981.

Literature:
R. Schmit, *Eugène Boudin*, Paris, 1973, vol. I, p. 73, no. 229 (illustrated).



CHARLES EPHRAIM BURCHFIELD

(American 1893-1967)

Cherry Tree in May, 1916

Watercolor over pencil on paper

14 x 10 inches

Signed and dated *C. E. Burchfield 1916* lower right

Dated *May 1916* on the verso

Provenance:

Charles E. Burchfield Foundation

Kennedy Galleries, New York, 1986

Acquired from the above by the present owner

Literature:

Joseph S. Trovato, *Charles Burchfield: Catalogue of Paintings in Public and Private Collections*, Utica, New York, 1970, no. 80, pg. 42.

Exhibited:

New York, Metropolitan Museum of Art, *Charles Burchfield*, 1984



SÖREN EMIL CARLSEN
(American 1853-1932)
***Connecticut Hillside*, circa 1920**
Oil on canvas
29 x 27 inches
Signed *Emil Carlsen* lower right

Provenance:

Macbeth Gallery, New York, 1921
Walter H. Schulze Memorial Collection
Acquired as a gift from the above, 1930
Art Institute of Chicago, 1930-2016

Literature:

The Art Club of Philadelphia, *Exhibition of Oil Paintings by Lilian Westcott Hale, Emil Carlsen, and Charles H. Davis*, 1923, no. 11
New York, The Macbeth Gallery, Recent Paintings by Emil Carlsen, N.A., 1921
Art Institute of Chicago, *Century of Progress: Exhibition of Paintings and Sculpture*, 1933, no. 436, p. 60, illustrated
Storrs, Connecticut, William Benton Museum of Art, *Connecticut and American Impressionism*, 1980, no. 6, pp. 56, 63, illustrated

Exhibited:

“The Walter H. Schulze Memorial,” Bulletin of the Art Institute of Chicago 24, 1930, p. 79
“Emil Carlsen,” Bulletin of the Art Institute of Chicago 26, 1932, p. 35
Art Institute of Chicago, *Guide to the Paintings in the Permanent Collection*, 1932, p. 145
Art Institute of Chicago, *Paintings in the Art Institute of Chicago: A Catalogue of the Picture Collection*, 1961, p. 67
Donelson F. Hoopes, *The American Impressionists*, New York, 1972, pp. 7, 110–11, illustrated
Emil Carlsen (1853-1932) As Landscape Painter: A Chronological Introduction to Some of the Major Works and Their Critical Reception, 1997
Kim Lykke Jensen, *Soren Emil Carlsen: The Hammershoi of Manhattan*, Gylling, Denmark, 2008, fig. 55, p. 73, illustrated



SÖREN EMIL CARLSEN
(American 1853-1932)
Roses and Oriental Porcelain, circa 1895
Oil on canvas
24 ⁷/₈ x 14 ³/₄ inches
Signed *Emil Carlsen* lower left

Provenance:
Mr. and Mrs. Louis C. Krueger, at least until 1983

Exhibited:
Evanston, Illinois, Terra Museum of American Art, *Two Hundred Years of American Painting from Private Chicago Collections*, 25 June – 2 September 1983, catalogue p. 20, no. 29 as *Still Life, Roses and Oriental Vases*



SIR GEORGE CLAUSEN

(British 1852-1944)

Still Life of Carnations

Oil on canvas

12 $\frac{3}{4}$ x 10 $\frac{3}{4}$ inches

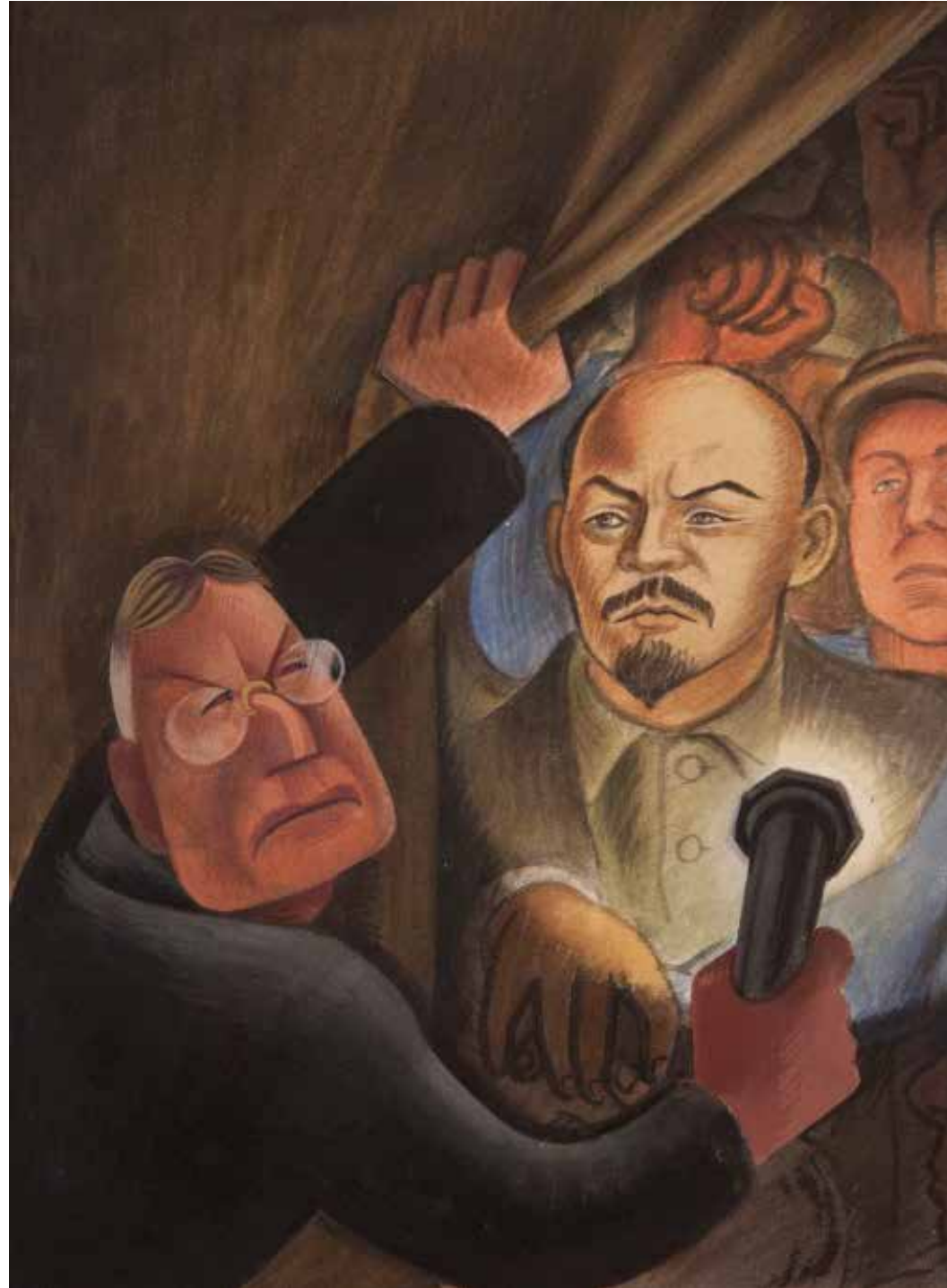
Signed *G. Clausen* lower right

Provenance:

Sale: Christie's, London, November 12, 1976, lot 27, illustrated (titled *Carnations in Two Glass Vases*)
(Probably) Sale: Sotheby's, Belgravia, June 27, 1978, lot 126

Exhibited:

London, Leicester Galleries, *Paintings and Drawings by George Clausen RA*, 1909, no. 11



MIGUEL COVARRUBIAS

(Mexican 1904-1957)

Rockefeller Discovering the Rivera Murals, 1933

Gouache and ink on paper

14 x 10 inches

Signed and annotated in pencil lower right

Provenance:

Forbes Collection, New York

Sale: Sotheby's, New York, May 29, 1985, lot 323

Exhibited:

South of the Border: Mexico in the American Imagination, 1914-1947, Yale University Art Gallery, New Haven, September 10-November 21, 1993; Phoenix Art Museum, December 26, 1993-February 13, 1994; New Orleans Museum of Art, May 7-July 17, 1994; Museo de Monterrey, Mexico, September 9-November 20, 1994.

Shared Traditions: African American Modernists and the Mexican Muralists, The American Federation of Arts; The Studio Museum in Harlem, New York, September 15-December 1, 1996; African American Museum, Dallas, January 3-March 2, 1996; Edsel and Eleanor Ford House, Grosse Pointe Shores, Michigan, March 26-May 25, 1996; California Afro-American Museum, Los Angeles, June 20-August 17, 1994; Diggs Gallery, State University, Winston-Salem, North Carolina, September 12- November 9, 1996; Dayton Art Institute, Dayton, Ohio, December 5, 1997-February 1, 1998; The Mexican Museum, San Francisco, February 27-April 26, 1998.

In the Spirit of Resistance: African American Modernists and the Mexican Muralist School, the Studio Museum in Harlem, New York, September 15-December 1, 1996; African American Museum, Dallas, January 3-March 2, 1997; Edsel and Eleanor Ford House, Grosse Pointe Shores, Michigan, March 26-May 25, 1997; Diggs Gallery, State University, Winston-Salem, North Carolina, September 12-November 9, 1997; Dayton Art Institute, Dayton, Ohio, December 5, 1997-February 8, 1998; The Mexican Museum, San Francisco, California, February 27-April 26, 1998, reproduced.

200 Years of American Art From the Forbes Magazine Collection, The Forbes Magazine Galleries, New York, May 26-September 4, 1999, No. 63.

Nexus New York: Latin/American Artists in the Modern Metropolis, El Museo del Barrio, October 17, 2009-February 28, 2010.

Note:

This work is a spoof of an incident leading to the destruction of the Diego Rivera mural commissioned for Rockefeller Center. Here John D. Rockefeller, Jr. is depicted discovering the heretical image of Lenin in this citadel of capitalism, horror and disbelief reflected in his flinty gaze in contrast to the stoic calm of the Communist leader and the inspired will of his follower



PASCAL DAGNAN-BOUVERET

(French 1852-1929)

Lady in Pink with her Child, 1882

Oil on canvas

25 x 32 inches

Signed and dated *PAJ Dagnan 1882* lower right

Provenance:

Hammer Galleries

Mr. Jeffrey and Mrs. Jill Stoff, Wellesley, Massachusetts

Literature:

Catalogue des Oeuvres de M. Dagnan-Bouveret, Peintures, Paris, 1930, Librairie du Bulletin de L'Academie des Beaux-Arts, pg. 23 as *Jeune femme en rose avec son enfant*.



CHARLES-FRANÇOIS DAUBIGNY
(French 1817-1878)

***Auvers-sur-Oise*, 1864**

Oil on panel

15 ½ x 26 inches

Signed and dated *Daubigny 1864* lower left

Provenance:

Collection of William Hood Stewart, until 1898

Henry Reinhardt Paintings and Works of Art

V. S. Logan, Chicago, Illinois, 1900

Mrs. Marianne H. Low, New York, circa 1968

Exhibited:

New York, American Art Galleries, *Modern Masterpieces gathered by the Late Connoisseur William H. Stewart*,
February 3-4, 1898, no. 35, illustrated

Note:

Certificate of authenticity from Boussod, Valadon & Cie., dated July 9, 1900.



MAURITZ FREDERIK HENDRIK DE HAAS
(American 1832-1895)

***Morning, Long Island*, circa 1880**

Oil on canvas

14 ¼ x 24 ¼ inches

Signed *M. F. H. de Haas* lower right

Inscribed *Morning, Long Island, de Haas* on the reverse

Provenance:

Private Collection, Santa Barbara, California



CHARLES DEAS

(American 1818-1867)

Western Landscape with Waterfall and Figure, 1847

Oil on paper or card

6 x 9 inches

Signed & dated *Charles Deas 1847* lower left

Provenance:

A private New Mexico collection.



MAURICE DENIS
(French 1870-1943)
***The Public Garden*, circa 1900**
Oil on artist's board
9 ¼ x 13 inches
Monogrammed *MAUD* lower right

Provenance:
Galerie Paul Vallotton, Lausanne, 1983 (no. 12474 in their archives)

Note:
This picture is to be included in the forthcoming catalogue raisonné being compiled by Claire Denis and Fabienne Stahl at no. 900.0023* and is accompanied by a letter of authenticity.



WERNER DREWES

(American 1899-1985)

African Violet, 1947

Oil on canvas

22 ½ x 17 ½ inches

Signed and dated *DREWES / 47* lower left

Provenance:

Wadsworth Atheneum Sumner Collection, Hartford, Connecticut, 1960-1998

Dr. James Lodge, San Juan Capistrano

Richard Norton Gallery, Chicago, Illinois

Art Exchange Gallery, San Francisco, California

Exhibited:

San Francisco International Art Expo, 2002



WERNER DREWES

(American 1899-1985)

Composition #468, 1946

Oil on canvas

30 x 44 inches

Signed *Drewes* lower left

Signed with the artist's device and dated *46* lower right

Signed with the artist's device, dated *46* and numbered *468* on the reverse

Provenance:

Tilden-Foley Gallery, New Orleans

Acquired from the above by a Midwestern collector



WERNER DREWES
(American 1899-1985)
Lighthouse and Gulls, 1948
Oil on canvas
28 x 18 inches
Signed, inscribed and dated *DREWES / 48* lower right

Literature:
Julie Novarese Pierotti, *Modern Dialect*, Dixon Gallery and Gardens, Memphis, Tennessee, 2012, pg. 117, plate 68, illustrated



HENRI FANTIN-LATOURE

(French 1836-1904)

***Fleurs des Champs*, 1978**

9 $\frac{3}{4}$ x 10 $\frac{1}{2}$ inches

Oil on canvas wrapped around panel

Signed and dated *Fantin 78* lower left

Provenance:

Edwin Edwards, London

Sir Robert Leicester Harmsworth, United Kingdom

Etienne Bignou, Paris

Private collection, Dallas

Exhibited:

Mme. Fantin-Latour, *Catalogue de l'oeuvre complet de Fantin-Latour*, Floury Editeur, Paris, 1911, p. 94, No. 894;

Frank Gibson, *The Art of Fantin-Latour: His Life and Work*, Drane's, Ltd., London, 1924, p. 101, pl. 28.

Note:

This picture is to be included in the forthcoming catalogue raisonne of the artist's work being compiled by Brame & Lorenceau.



GILBERT GAUL
(American 1855-1919)
Gone Fishing, circa 1890
Oil on canvas
11 3/4 x 16 inches
Signed *G. Gaul* lower left

Provenance:
Collection of Thomas Van Loan.



GILBERT GAUL

(American 1855-1919)

***Two Indians in a Canoe, Forest Interior*, circa 1890**

Oil on canvas

40 x 30 inches

Signed *Gilbert Gaul* lower left

Provenance:

Sold to benefit the acquisition fund of the Hood Museum of Art, Dartmouth College, Hanover, New Hampshire
M.R. Schweitzer Gallery, New York



REX GORELEIGH
(American 1902-1986)
***The Social Hour*, 1971**
Oil on canvas
42 ½ x 60 ½ inches
Signed *Goreleigh* lower right

Provenance:
Collection of John Ralph Willis (1938-2007), Hightstown, New Jersey
By descent to the Collection of Anne Jones, Hightstown, New Jersey



CHARLES GUILLOUX

(French 1866-1946)

Evening, 1895

Oil on canvas

16 7/8 x 21 inches

Signed and dated *C. Guilloux 95* lower right



HENRI JOSEPH HARPIGNIES

(French 1819-1916)

***Le Lavandière*, 1875**

Oil on canvas

13 1/4 x 16 1/4 inches

Signed and dated *Harpignies 1875* lower left

Provenance:

Private Collection, Placerville, California



HOWARD HILDEBRANDT
(American 1903-1959)
Painting of a Girl
Oil on canvas
20 x 16 inches
Signed *H. Hildebrandt* lower left

Exhibited:
Milch Galleries, New York



GEORGE INNESS
(American 1825-1894)

Pastoral Scene, 1866

Oil on artist's board

9 7/8 x 12 7/8 inches

Signed and dated *G. Inness 1866* lower left

Provenance:

The artist

Given from the above as a wedding gift to Roswell Hawkes Lamson and his wife, Catherine Buckingham Lamson,
1867-

By descent to their daughter, Helen Lamson Renaud, 1949

By direct descent in the family, until 2007

Literature:

Quick, Michael, *George Inness: A Catalogue Raisonné*, Volume One, New Brunswick, New Jersey: Rutgers University Press, 2007, no. 259, page 258.



GEORGE INNESS

(American 1825-1894)

Summer, Montclair, 1887

Oil on canvas

38 x 28 ½ inches

Signed and dated *G. Inness 1887* lower right

Provenance:

Mr. and Mrs. John J. Albright, Buffalo, New York, by 1907

George Bates Harrington, Chicago, Illinois, 1925-1960

By descent to Miss Mary Bates Harrington, Chicago, Illinois, until 1960

Estate of the above

Sold by the above at Christie's, New York, 25 May 2000, lot 43

Acquired by Edgar M. Bronfman, 2000-2013

Estate of Edgar M. Bronfman, 2013-2016

Literature:

“The Loan Collection of Paintings Owned by Citizens of Buffalo,” *Academy Notes*, vol. 3, no. 6, Buffalo, New York, November 1907, p. 97, illustrated

“Paintings by the Late George Inness Owned by Buffalonians, on Exhibition at the Albright Art Gallery,” *Academy Notes*, vol. 14, no. 2, Buffalo, New York, April-June 1919, pp. 42-43, illustrated

The International Studio, vol. 74, no. 296, November 1921, p. 3

The Buffalo Arts Journal, vol. 7, no. 8, November 1925, p. 9, illustrated

L. Ireland, *Works of George Inness*, Austin, Texas, 1965, p. 312, no. 1246, illustrated

M. Possley, “Greek Fugitive Charged in the Case of the Purloined Paintings,” *Chicago Tribune*, February 17, 1988

M. Quick, *George Inness: A Catalogue Raisonné*, vol. 2, New Brunswick, New Jersey, 2007, pp. 212-14, no. 914, pl. 189, illustrated

Exhibited:

Buffalo, New York, Buffalo Fine Arts Academy, Albright Art Gallery, *Loan Collection of Paintings Owned by Citizens of Buffalo*, October 10-24, 1907, no. 75, illustrated.

Buffalo, New York, Buffalo Fine Arts Academy, Albright Art Gallery, *Seventh Annual Exhibition of Selected Paintings by American Artists*, May 21-September 2, 1912, pp. 23, 39, no. 79, illustrated.

St. Louis, Missouri, City Art Museum, *Seventh Annual Exhibition of Selected Paintings by American Artists*, September 1912, p. 48, no. 62 (as Summer).

Buffalo, New York, Buffalo Fine Arts Academy, Albright Art Gallery, *Paintings by the Late George Inness Owned by Buffalonians*, December 14, 1918-March 1919.

Buffalo, New York, Buffalo Fine Arts Academy, Albright Art Gallery, *Exhibition of Paintings and Tapestries Collected by Mr. and Mrs. John J. Albright*, June 2-September 6, 1921, pp. 5, 15, no. 1, illustrated.

Buffalo, New York, Buffalo Fine Arts Academy, Albright Art Gallery, *George Inness Centennial Exhibition, 1825-1925*, October 30-November 30, 1925, no. 34.

Chicago, Illinois, Terra Museum of American Art, by 1995-2000, on loan.



EASTMAN JOHNSON

(American 1824-1906))

Crossing a Stream (Pig-a-Back), 1866

Oil on board

21 1/8 x 17 inches

Signed and dated *E. Johnson/66* lower right

Provenance:

The artist.

General Benjamin Rush Cowen, Washington, D.C., circa 1870s

Mrs. William Wyatt Breckinridge, granddaughter of the above, Montrose, Alabama, by descent, by 1954

Mrs. J.A. Barnard, New York

Kennedy Galleries, Inc., New York

Private collection, New York, acquired from the above, 1964

Babcock Galleries, New York

Private collection, Massachusetts, acquired from the above, 2000

By descent to a prominent New England Collector

Literature:

H.T. Tuckerman, *Book of the Artists*, New York, 1870, p. 471.

C.E. Clement and L. Hutton, *Artists of the Nineteenth Century and Their Works*, vol. 2, Boston, Massachusetts, 1889, p. 11.

P. Hills, *The Genre Painting of Eastman Johnson: The Sources and Development of His Style and Themes*, New York, 1977, p. 135 as *Pig-a-Back*.

Exhibited:

Philadelphia, Pennsylvania, *Artist's Fund Society*, February 1867, no. 71 as *Crossing the Brook*.

New York, Kennedy Galleries, Inc., *American Masters: 18th and 19th Centuries*, March 14-April 7, 1973, p. 30, no. 27, illustrated as *Crossing the Brook*.

New York, Kennedy Galleries, Inc., *Art of America: Selected Painting and Sculpture 1770-1981*, November 11, 1981-January 15, 1982, no. 4, ill.

New York, Babcock Galleries, *From Light of Distant Skies: A Selection of 19th Century American Paintings*, April 8-August 11, 2010, no. 8

New York, Driscoll Babcock Galleries, *Refuge and Remembrance: Landscape Painting in the Civil War Era*, May 16-June 22, 2013.

Note:

This picture will be included in the forthcoming catalogue raisonne being compiled by Dr. Patricia Hills and is accompanied by a letter of authenticity.



ROCKWELL KENT
(American 1882-1971)

Greenland

Ink on paper

4 ½ x 11 ½ inches

Stamped on the reverse *For use as ... Original drawing the property of Rockwell Kent and to be returned to him at Au Sable Forks, New York*

Provenance:

The Artist



STANISLAS LÉPINE

(French 1835-1892)

***La Seine au Pont Solferino*, circa 1875-79**

Oil on canvas

15 ¼ x 23 ¼ inches

Signed S. *Lépine* lower left

Provenance:

Georges Petit, Paris

A. Tooth & Sons, Ltd., London

Collection of Mrs. Reginald B. (Gabriel Warren) Rives, Seacliff, Bellevue Ave., Newport

By descent to her son, Lloyd Michael Rives, Boston

Literature:

Schmit, Robert & Manuel, *Stanislas Lépine 1835-1892: Catalogue Raisonné de l'oeuvre peint*, Paris: Editions Galerie

Schmit, 1993, pg. 42, no. 100



LUIGI LOIR

(French 1845-1916)

***Sur la Plage, Deauville*, circa 1880**

Gouache with pastel

13 ½ x 10 inches

Signed & inscribed *LOIR LUIGI n. 105* lower right

Provenance:

Knoedler & Company, New York

Hirschl & Adler Galleries, New York

Maxwell Galleries, San Francisco



GEORGES MICHEL

(French 1763-1843)

View of Saint-Malo, Brittany

Oil on canvas

14 ½ x 22 inches

Note:

This painting is to be included in the forthcoming catalogue raisonné of the artist's work being compiled by Michel Schulman and is accompanied by a letter of authenticity.



PIERRE EUGENE MONTEZIN

(French 1874-1946)

The Seine at St. Mammes, circa 1925

Oil on canvas

28 ¾ x 28 ¾ inches

Signed *Montezin* lower right

Titled *St. Mammes* on the reverse



GIORGIO MORANDI

(Italian 1890-1964)

Paesaggio, Casa bruciata, 1959

Watercolor and graphite on paper

13 ¼ x 9 ¾ inches

Signed and dated *Morandi 1959* lower left

Provenance:

Alitalia Collection, Rome

Sale: Finarte, Rome, 8 December 2009, lot 134



GEORGE L.K. MORRIS

(American 1905-1975)

***Dismembered Disks*, circa 1947-49**

Oil on canvas

19 x 23 ¼ inches

Signed *Morris* lower right

Signed, dated and inscribed with the title *Morris 1947-9*

Provenance:

The Downtown Gallery, New York

Circulating Gallery of the Dayton Art Institute, Dayton, Ohio

Private Collection, New Jersey

Sale: Christie's New York, December 5, 2013, lot 140

Acquired by the present owner at the above sale



GEORGE L.K. MORRIS

(American 1905-1975)

Indian Composition

Oil on board

13 x 15 ½ inches

Signed *Morris* lower right

Provenance:

Dr. Herbert Kayden and Dr. Gabrielle Reem



GEORGE L.K. MORRIS
(American 1905-1975)
Indian Emblems, 1937
Watercolor on paper
8 x 7 ¼ inches (sight)
Monogrammed *GLKM* lower left

Provenance:
The artist's estate
Hirschl & Adler Galleries, New York, 1972
Closson's, Cincinnati, 1973



EMIL NOLDE
(German 1867-1956)
Tulpen and Kakteen
Gouache on wove paper
10 $\frac{3}{8}$ x 18 inches
Signed *Nolde* lower left

Provenance:

Nolde Foundation

On consignment through Knoedler & Co., New York, February 16, 1967

Sold to a private collection, April 11, 1967

Private Massachusetts Collection

Literature:

M. Knoedler & Co. records, approximately 1848-1971, The Getty Research Institute, Los Angeles, Accession no. 2012.M.54, Series III. Commission Books, 1879-1973, Box 99, Commission Book No. 6, CA 7492



IVAN OLINSKY
(American 1888-1986)
The Book, circa 1912-1914
Oil on canvas
30 x 25 inches
Signed *Ivan G. Olinsky* upper right



JEAN-FRANÇOIS RAFFAËLLI
(French 1850-1924)
Boulevard Malesherbes, Paris, circa 1890
Oil on board
15 ¼ x 21 ¾ inches
Signed *J.F. RAFFAËLLI* lower right

Provenance:
Estate of John F. Norwood, St. Louis, Missouri



JEAN-FRANÇOIS RAFFAËLLI
(French 1850-1924)
The Harbor, Marseille, circa 1890
Oil on paper mounted on panel
10 ⁵/₈ x 13 ³/₄ inches
Signed *JF RAFFAËLLI* lower left



FRANCIS HOPKINSON SMITH

(American 1838-1915)

Plaza with Fountain and Cafe

Gouache and watercolor on paper/board

Size: 18 7/8 x 27 3/8 inches

Signed *F. Hopkinson Smith* lower left



JOSEPH STELLA
(American 1877-1946)
Pittsburg Steel Mill
Charcoal on paper
14 $\frac{3}{4}$ x 20 $\frac{3}{4}$ inches
Signed *J. Stella* lower left

Provenance:

Tibor de Nagy, New York

Acquired by Jeffrey M. Kaplan, Washington, D.C.

Literature:

Rabin & Krueger Gallery, *Drawings of Joseph Stella: from the collection of Rabin & Krueger*, 1962, illustrated at plate 76

Exhibited:

New York, Whitney Museum of American Art, *Joseph Stella*, 1963, no. 67

Fort Worth, Amon Carter Museum, *Visual Poetry: The Drawings of Joseph Stella*, February 23– April 22, 1990



JOSEPH STELLA
(American 1880-1946)
Tropical Fruit, circa 1938
Watercolor and India ink on paper
13 ½ x 20 inches
Signed *Joseph Stella* lower right



ANTHONY THIEME

(American 1888-1954)

On the River near Barrios Guatemala

Oil on Newton canvasboard

16 x 20 inches

Signed AThieme lower right

Titled and signed ... /by AThieme on the reverse

Note:

There is a label from J. Assenheim & Son, New York on the reverse.



NEWBOLD HOUGH TROTTER

(American 1827-1898)

Startled by the Iron Horse, 1860

Oil on canvas

22 x 40 inches

Signed & dated *N.H. Trotter Philadelphia 1860* lower left



MARTHA WALTER
(American 1875-1976)
Crowded Beach
Oil on board
14 x 18 inches
Signed *Martha Walter* lower left

Provenance:

Estate of the artist

David David, Inc., Philadelphia, Pennsylvania

John H. Surovek Fine Arts, Palm Beach, Florida

John J. McDonough collection, Massachusetts

Sale: New York, Christie's, The American Impressionist Collection of John J. McDonough, 4 December 1992, lot 43, sold for \$24,200

The estate of Dr. Alfred Ziviello, 2014

Exhibited:

Youngstown, Youngstown State University, The John J. McDonough Museum of Art, *Inaugural Exhibition*, October 1991-May 1992



MAX WEBER

(American 1881-1961)

Still Life of Fruit, Vase and Cup, 1910

Pastel on paper laid down on heavy card

11 ¼ x 9 inches

Signed *Max Weber* '10 lower right

Stamped *MW* by the artist on the reverse



EDWIN LORD WEEKS

(American 1849-1903)

The Bazaar at Oudeypore, circa 1893

Oil on canvas

18 x 22 inches

Signed with estate stamp *E. Weeks* lower right

Stenciled and numbered 224 by the estate on the reverse

Provenance:

Estate of the Artist

A.I. Smith, 1905

Exhibited:

New York, American Art Galleries, *The Works of the Late Edwin Lord Weeks*, 11-17 March 1905, as *At the Shoemaker's*, no. 224



JOHN WHORF
(American 1903-1959)
Berry Pickers (Cape Cod)
Watercolor on paper
14 x 22 inches
Signed John Whorf lower right
Numbered 18. *Berry Pickers* on the reverse

Exhibited:
Milch Galleries, New York



JOHN WHORF
(American 1903-1959)
Middle Eastern Scene
Watercolor on paper
12 x 14 inches
Signed *John Whorf* lower left



IRVING RAMSEY WILES
(American 1861-1948)
Scallop Boats, Peconic Bay, circa 1915
Oil on panel
10 x 14 inches
Signed *Irving R. Wiles* lower left



FÉLIX ZIEM

(French 1821-1911)

Le Palais des Doges, vu du canal della Grazia, circa 1870

Oil on panel

16 ½ x 23 ¼ inches

Signed Ziem lower right

Provenance:

Knoedler, London, 1930

Ellwood R. Burdsall, by descent within his family

Literature:

Anne Burdin-Hellenbranth, *Félix Ziem, 1821-1911*, vol. I, Paris, 1998, p. 129, no. 316, illustrated



FÉLIX ZIEM

(French 1821-1911)

Study of Flowers in Nature

Oil on board

30 ½ x 21 inches

Signed *Ziem* lower left

Note:

This painting is accompanied by a letter of authenticity from Mathias Ary Jan stating it will be included in the forthcoming reproduction of the catalogue raisonne.